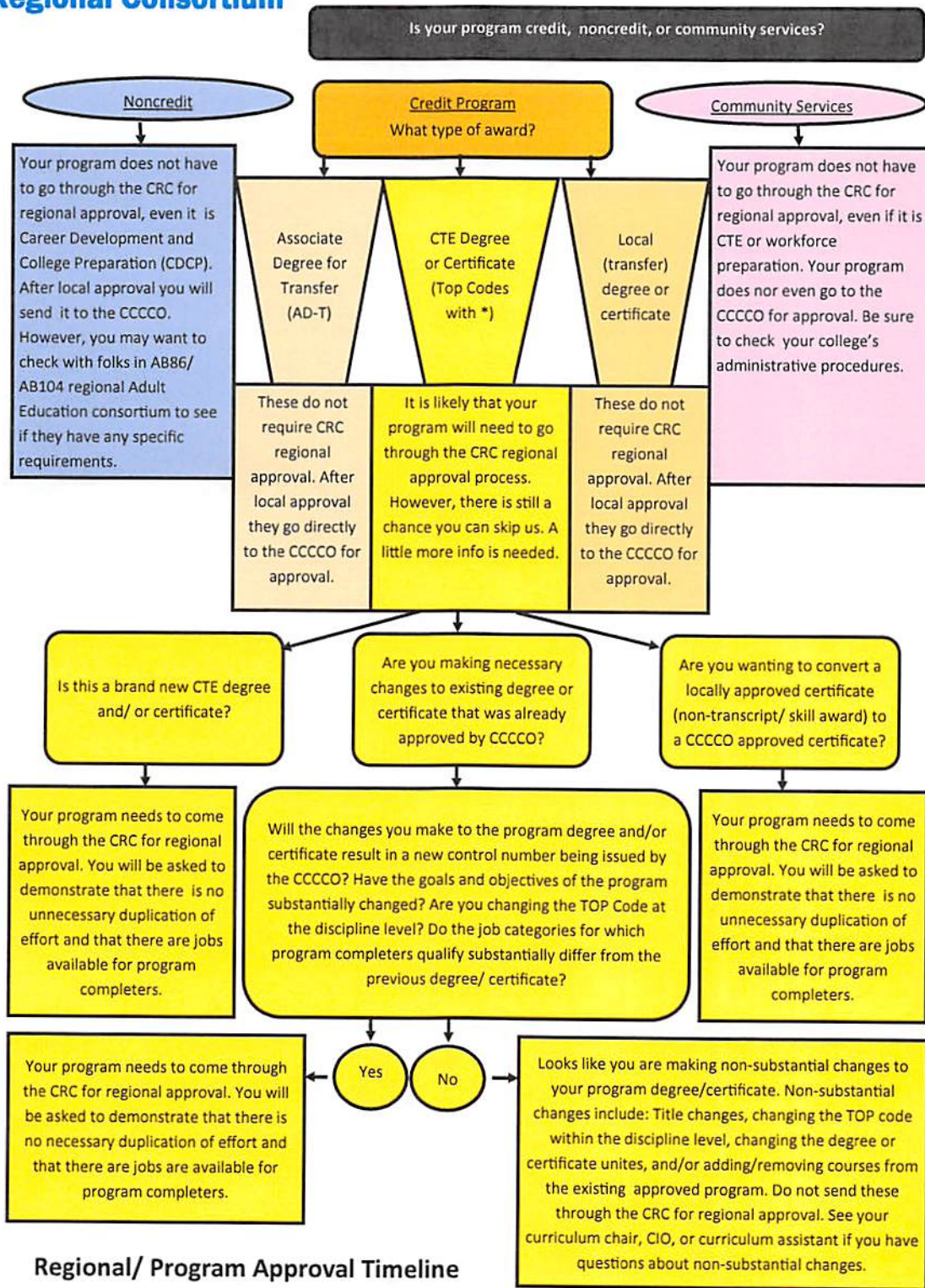


CRC Program Review Process



Regional/ Program Approval Timeline

Each college has a CRC voting member assigned by the college's Chief Instructional Officer who reviews, submits, and represents the college's programs through the regional approval process. These individuals understand the regional approval process, LMI, and know what is needed for programs to be approved. To avoid delay, you are strongly encouraged to involve your college's CRC voting member early in your program's development.

